

DESIGNTex

artisan
expression.



timeless
design.



dune



rake



unwind



theo





structure
+
dimension.



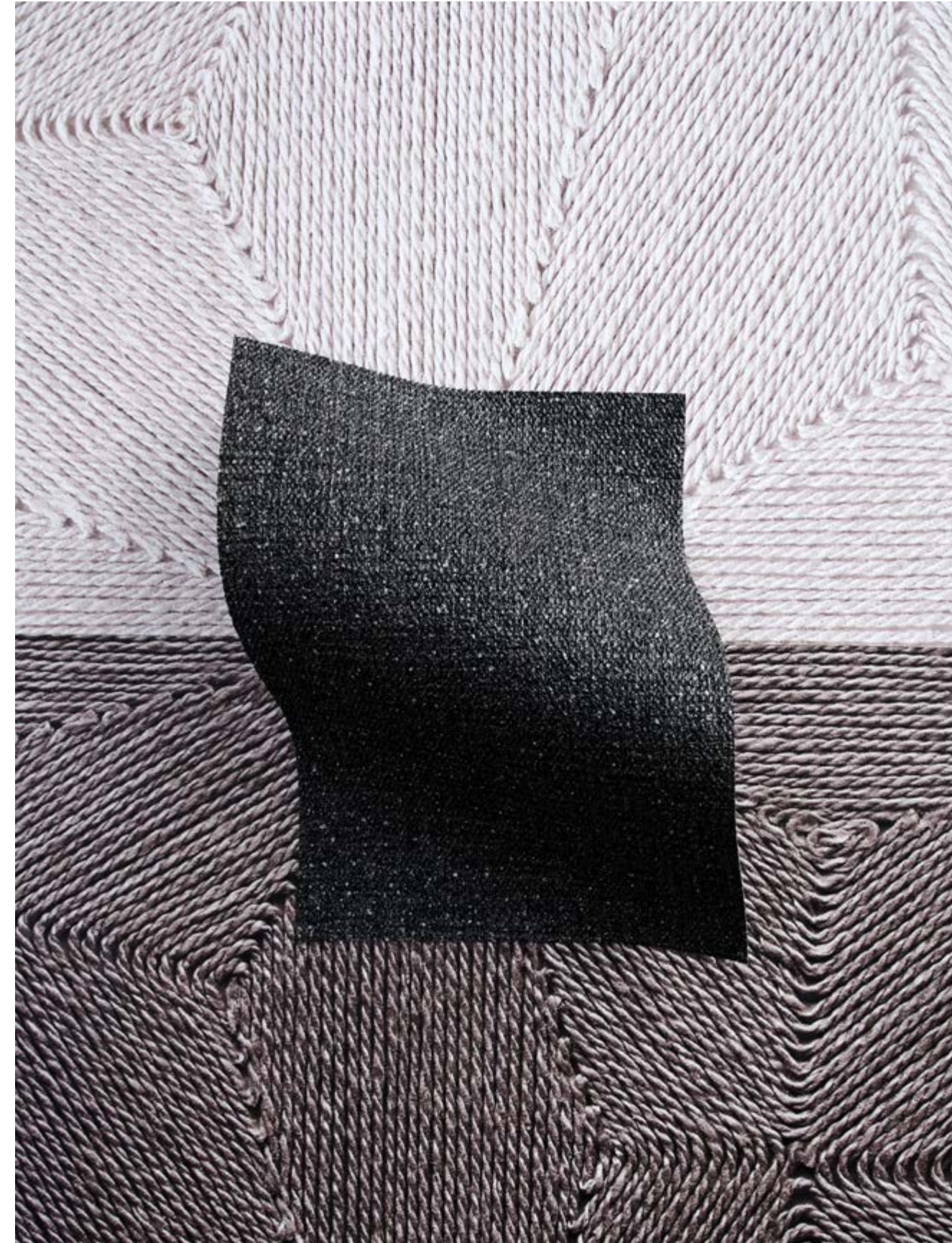




handcraft
to
digital.



blend

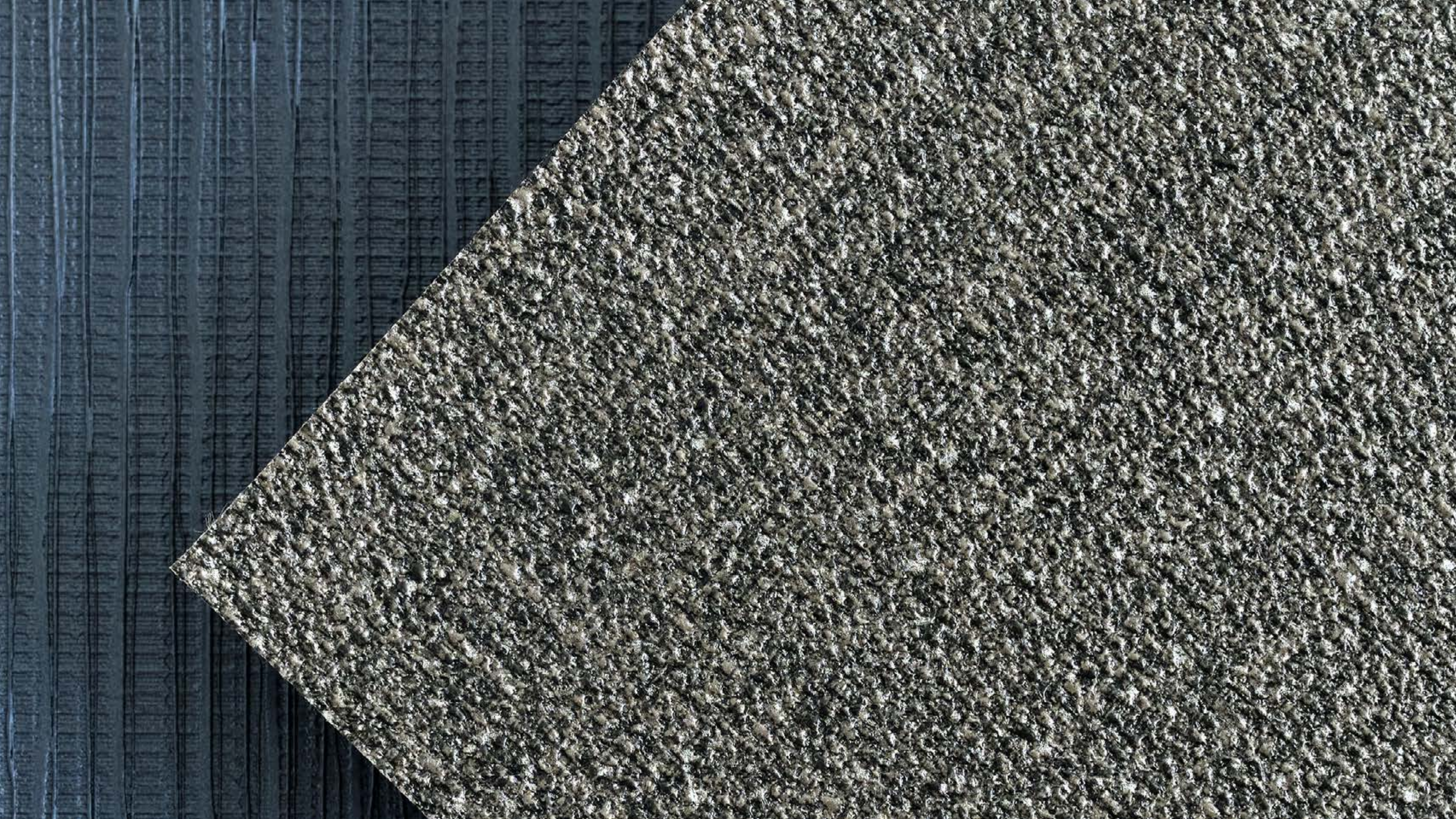


effortlessly.

Rake is a pattern by Jenny McGee Dougherty who uses a painting technique called sgraffito to reveal a celebration of painted colors hidden underneath a topcoat of black or white paint. Her hand scraped pieces were photographed and translated onto a digitally printed wallcovering that maintains the visual integrity of the depth and tactility of this painting method.







beauty
+
utility.





credit:

photography and styling by Meghan Mitchell

wooden sculptures by Elizabeth Atterbury [p. 1,5,7]

striped ceramic bowl by MQuon Studios [p. 1, 28]

book of paintings by Meghan Brady [p. 1]

ceramic vase by Meghan Mitchell [p. 1]

ceramic mug by Martina Thornhill [p. 1]

stucco and dirt covered glass vase by Meghan Mitchell [p.3, 7, 20]

antique woven Abenaki basket from the Ella V. Bowering collection
[p.13 top row third from left]

raffia weaving by Meghan Mitchell [p.13 bottom row right]

Mayan jippa jappa Belize palm basket purchased by Meghan Mitchell in
the Yucatan peninsula, Mexico [p.10- 11]



designtexdrop.com